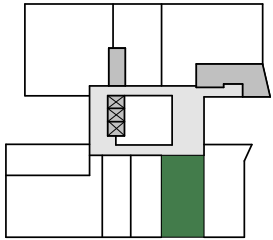


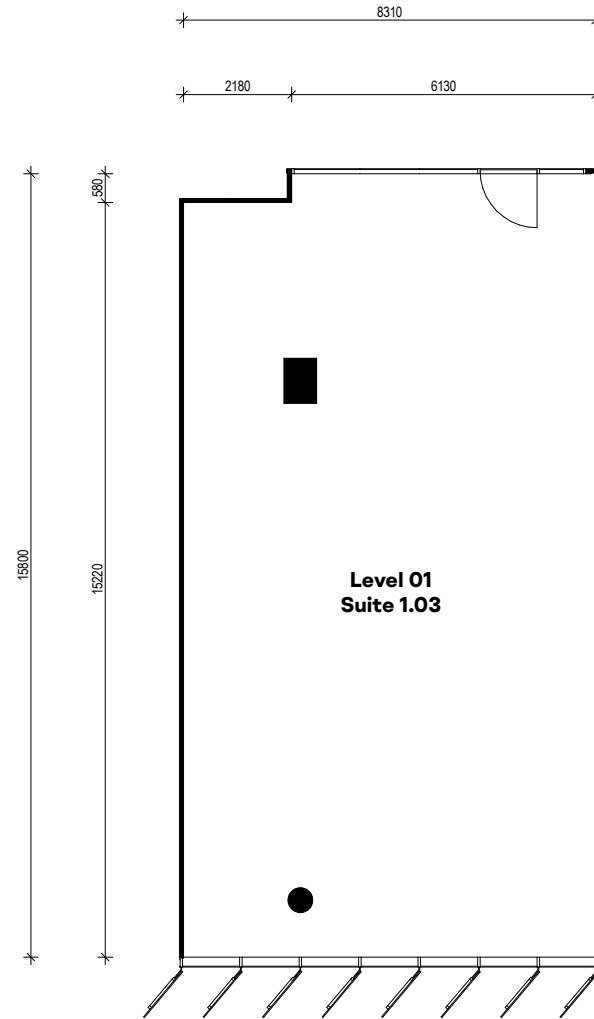


ORAN PARK

3 FORDHAM WAY.



Disclaimer: This plan is a guide only and does not constitute an offer or contract. Please note changes may be made during the development and areas, fittings, fixtures and specifications are subject to change without notice in accordance with the terms of the contract of sale. All parties must rely on their own investigation to validate this information as it is not guaranteed. No liability will be accepted for any inaccuracy or misstatement.



Level 1 Suite 1.03

130 sqm | 4 car spaces

salesoffice@greenfields.net.au
9043 7500
oranpark.com.au





ORAN PARK

Looking for a smart commercial investment?

3 Fordham Way is the latest A-Grade compatible commercial space offered for sale or lease in Oran Park. Standing alongside the existing Oran Park Podium retail and commercial precinct, 3 Fordham Way is the latest addition to Oran Park's growing commercial hub.



Car parking

All suites have parking allocation from the 250+ spots available

Breakout areas

Various areas available throughout the building including rooftop garden

Finish level

High quality finishes: 3 Fordham Way targets A-Grade building benchmarks

Sustainability

Planned to best practice green building design principles

Access to natural light

All suites are designed to capture the natural light

Availability

Available from 61sqm to whole floors

Centralised SW Sydney location

3 Fordham Way offers you a front-row seat to Western Sydney's growth

Atrium entrance

Striking entrance and foyer to impress your clients

Open floor plan

Tenants have the flexibility to fit out to their exact requirements

Rooftop access

All tenants will have access to the roof top terrace

Large lifts

3 Fordham Way is designed along A-Grade building standards including the lifts

Transport hub

Multiple transport modes at door

Bike storage and showers

Available for all suites

Loading dock

Services whole building

Ample street parking

Oran Park has been designed with an uncluttered master plan also reflected in the commercial area

Rooftop Terrace



Indicative Layout

