

# The Residences

WEBBER LOOP



## Double Storey Premium Home Lot 3595



5



3



2



263.44m<sup>2</sup>

### Inclusions

- Fixed site costs & basix
- 2585mm high ceilings to ground floor
- Reverse-cycle ducted air conditioning
- Hybrid timber-look flooring to main floor open areas
- Carpet to bedrooms
- Tiles to ceiling in all bathrooms with showers
- Shower niches to bathrooms
- Black-finish bathroom accessories
- Soft-close hinges to kitchen doors & drawers
- Dishwasher & microwave
- Full-width mirror sliding wardrobe doors
- Electrical package including downlights
- Roller blinds to all clear-glazed windows
- Flyscreens to openable windows
- Alarm with 4x motion sensors
- Video doorbell intercom with colour screen
- Driveway & footpath to entry doors
- Landscaping package
- Optional electric gates
- Plus, much more...

Located just a short distance from the vibrant Oran Park Town Centre, you'll enjoy the convenience of nearby shops, dining, and entertainment options.

The Podium Shopping Centre	5 min walk
Julia Reserve Youth Precinct	2 min walk
Grand Prix Park	5 min walk
LPC House	5 min walk
TRN House	5 min walk
Oran Park Leisure Centre	3 min drive
Thompson Health Care	3 min drive
NewLife Anglican Church	3 min drive
Wayne Gardner Oval	4 min drive
Dawson-Damer Park	5 min drive
Oran Park Library	5 min drive
Western Sydney Airport	17 min drive



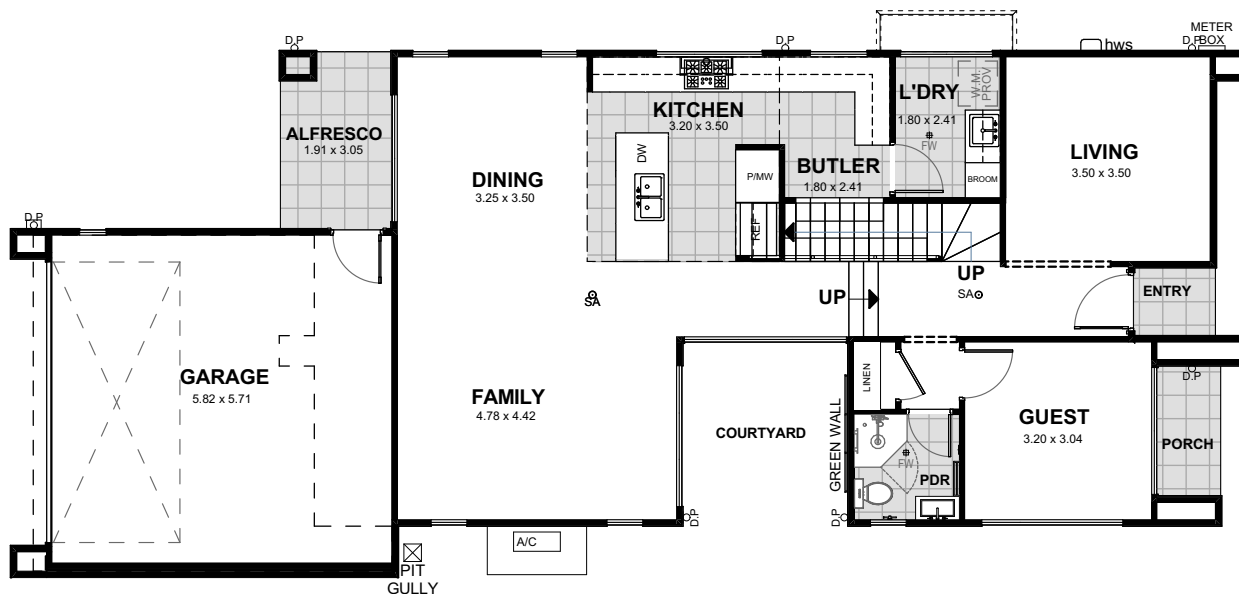
**ORAN PARK**



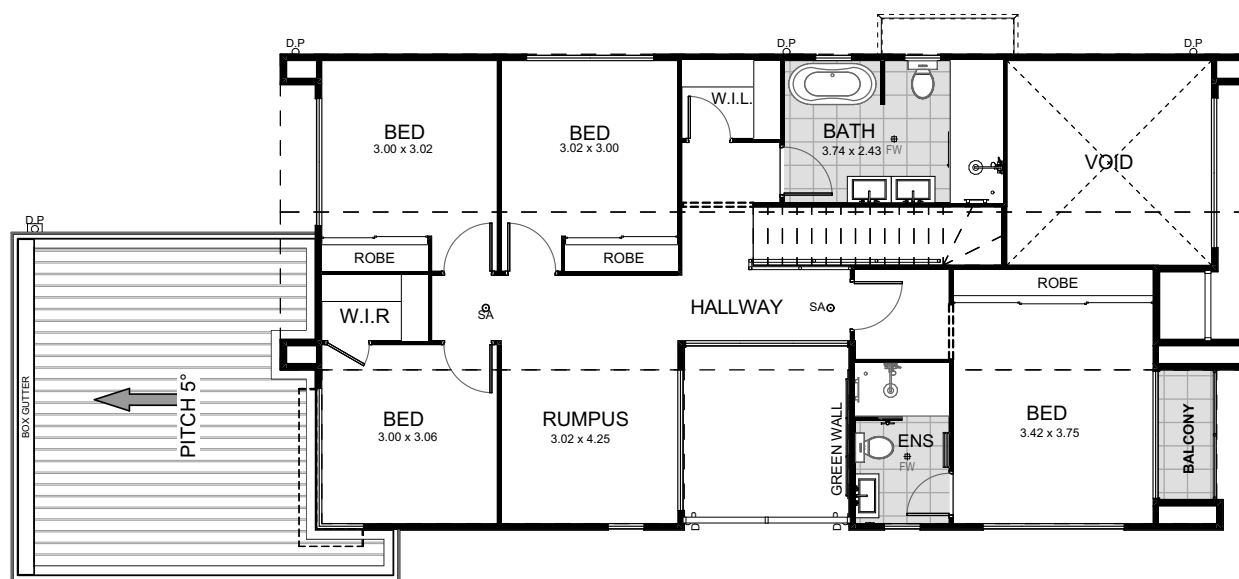
**Everyday**  
Homes

# Floor Plan

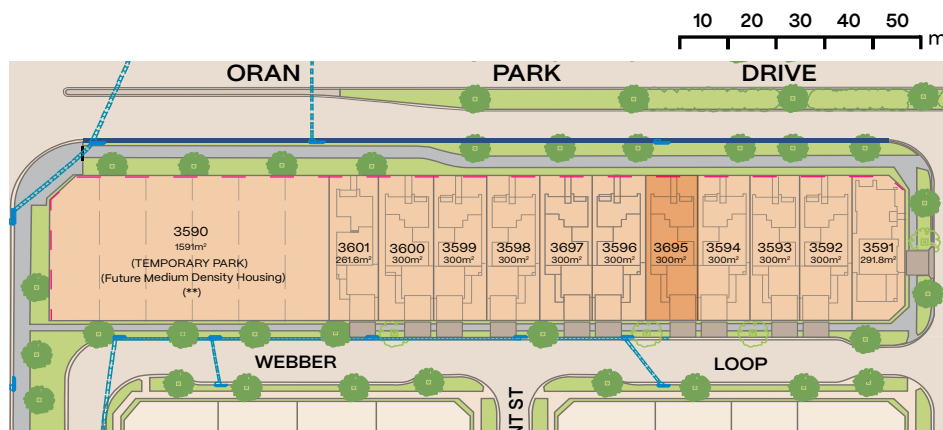
## Ground Floor



## Level One



	Area
Internal	215.38m <sup>2</sup>
Garage	35.85m <sup>2</sup>
Alfresco	5.83m <sup>2</sup>
Porch + Entry	4.14m <sup>2</sup>
Balcony	2.24m <sup>2</sup>
<b>Total</b>	<b>263.44m<sup>2</sup></b>



(\*\*) Future medium density housing development post construction of Metro Rail. Currently reserved for special purposes (TFNSW).



**ORAN PARK**



**Everyday**  
Homes

**1300 72 5500**  
**everydayhomes.com.au**