

MARIAN'S
MANA

STREETON



16 Newton Street
LOT 56



4



2.5



1



248.4m²



270m²

ARCHITECTURAL BUILT HOMES

INCLUSIONS

2740mm ground floor ceiling heights with increased 2340mm door heights

Square set cornice to ground floor with 90mm standard cove cornice to first floor

Turnkey dwelling with landscaping, boundary fence and feature front masonry and palisade fence

SMEG 900mm appliances including integrated dishwasher and rangehood

Stone benchtops to kitchen and bathrooms

Shark nose kitchen joinery

Full-height tiling to ensuite

Fully ducted air conditioning

Shower niche to all showers

LED downlights throughout

Hybrid timber-look flooring to main living areas with upgraded carpet to remaining areas

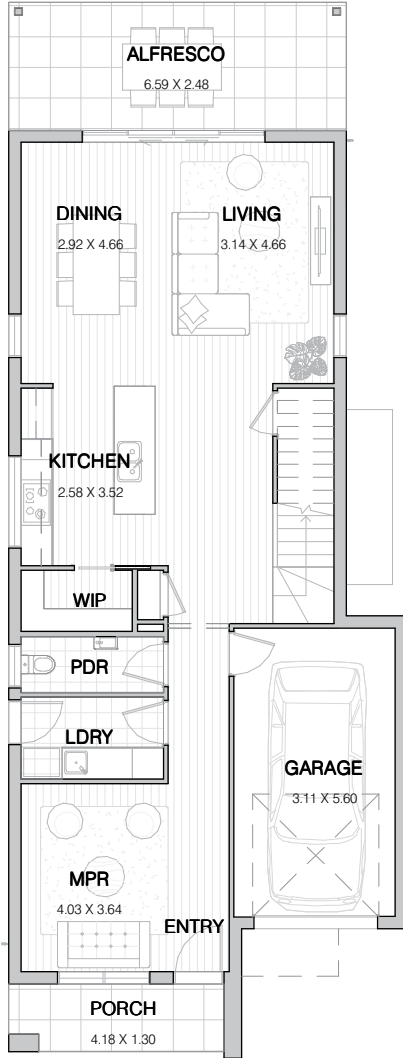
Laundry with built-in joinery

Located just a short distance from the vibrant Oran Park Town Centre, you'll enjoy the convenience of nearby shops, dining, and entertainment options.

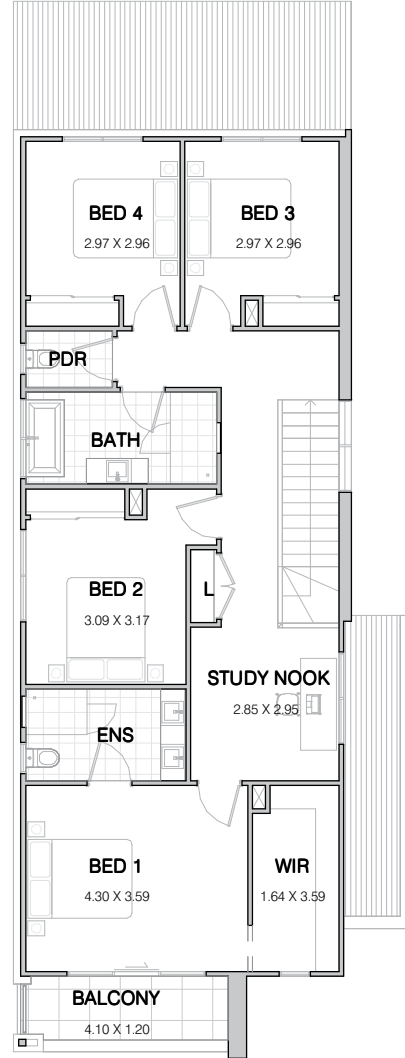
Oran Park Hotel	5 minute walk
Dawson Damer Park	5 minute walk
Future Pondicherry Lake	5 minute walk
Leisure Centre	10 minute walk
Podium Shopping Centre	10 minute walk
Thompson Health Care	10 minute walk
Library	10 minute walk
Oran Park Public – Primary and High Schools	15 minute walk
NewLife Anglican Church	2 minute drive
Wayne Gardner Oval	2 minute drive
Julia Reserve Youth Precinct	2 minute drive
LPC House & TRN House	2 minute drive
Grand Prix Park	2 minute drive
Western Sydney Airport	17 minute drive

FLOOR PLAN

GROUND FLOOR



LEVEL ONE



	AREA
Alfresco	16.5m ²
Balcony	6.5m ²
First Floor	104.3m ²
Garage	20.9m ²
Ground Floor	94.6m ²
Porch	5.5m ²
Total	248.4m²

