

MARIAN'S
MANA

NOLAN

LOT 10

Disclaimer: This artist's impression is for illustrative purposes only and may not accurately represent the specific lot. Please contact the sales team for detailed, lot-specific built form information.

143 CENTRAL AVENUE
LOT 10 | SIDNEY



4



3



2



188m²



213.6m²

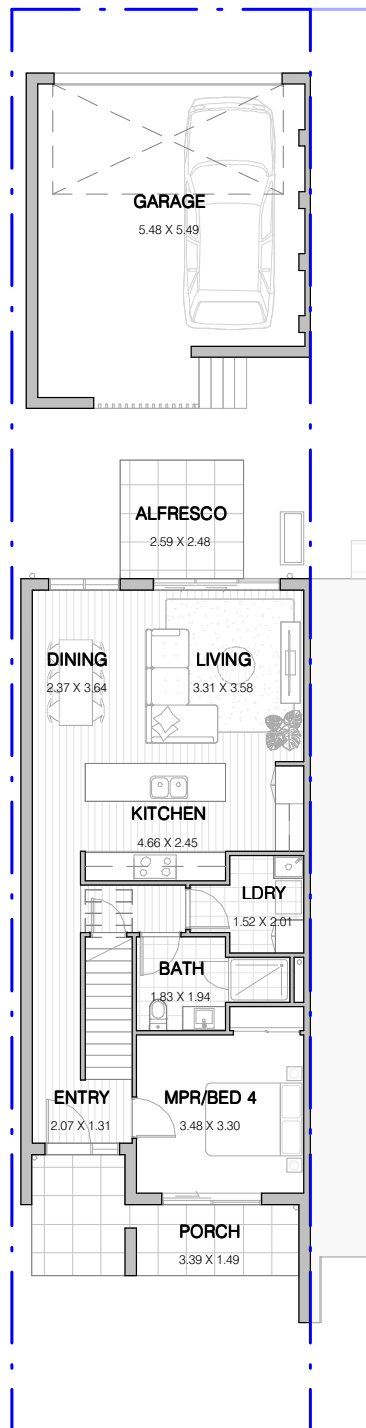
INCLUSIONS

Internal Colour Scheme: Truffle

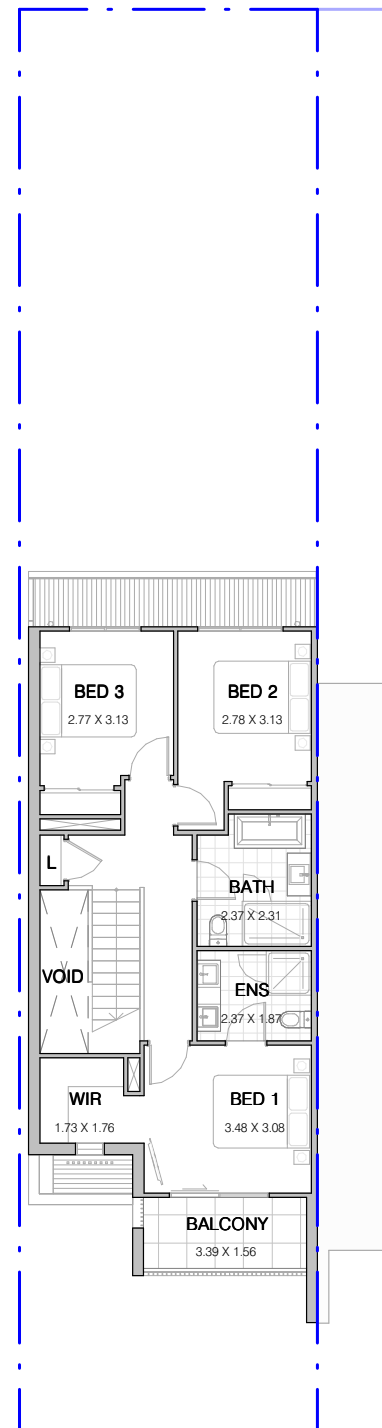
- Turnkey dwelling including landscaping, feature masonry and palisade front fence, side boundary fencing and letterbox
- 2740mm high ceilings to ground floor with increased doors
- SMEG 900mm appliances including integrated dishwasher and rangehood
- LED downlights throughout
- Stone benchtops to kitchen and bathroom
- Hybrid timber floor to main living areas with upgraded carpet to remaining areas
- Full-height tiling to ensuite with double vanity
- Square-set cornice to ground floor and first floor
- Ducted air-conditioning throughout
- Laundry with built-in joinery



GROUND FLOOR



FIRST FLOOR



FLOORSPACE AREA

Ground Floor	79.1m ²	Balcony	5.7m ²	Total Floorspace	213.6m²
First Floor	72.0m ²	Garage	39.8m ²	Total Lot Area	188.0m²
Porch	10.5m ²	Alfresco	6.5m ²		



ORAN PARK

02 9043 7500

oranpark.com.au