

MARIAN'S MANA NOLAN



2 MEREDITH STREET
LOT 14 + STUDIO | BOURKE + LEDA



4



3.5



3



452m²

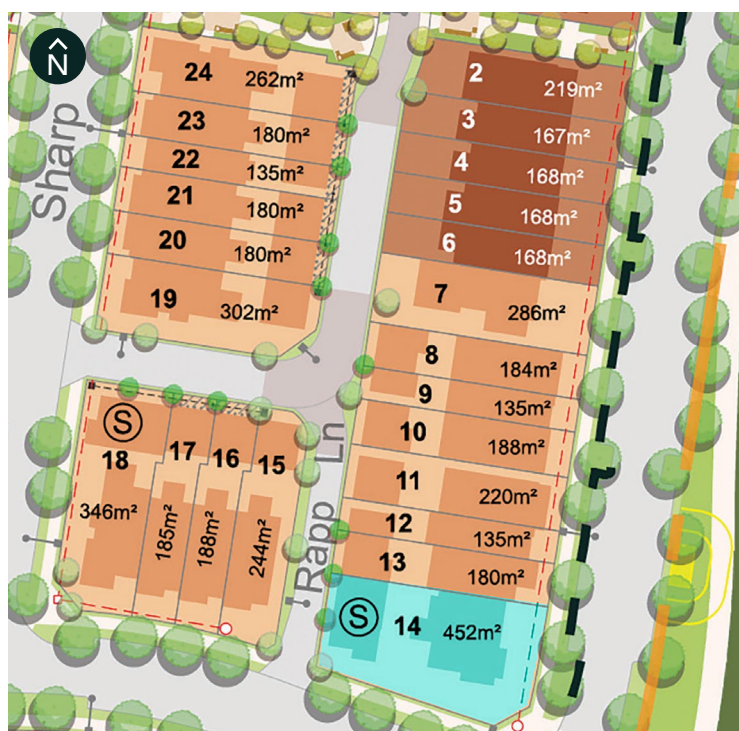


356m²

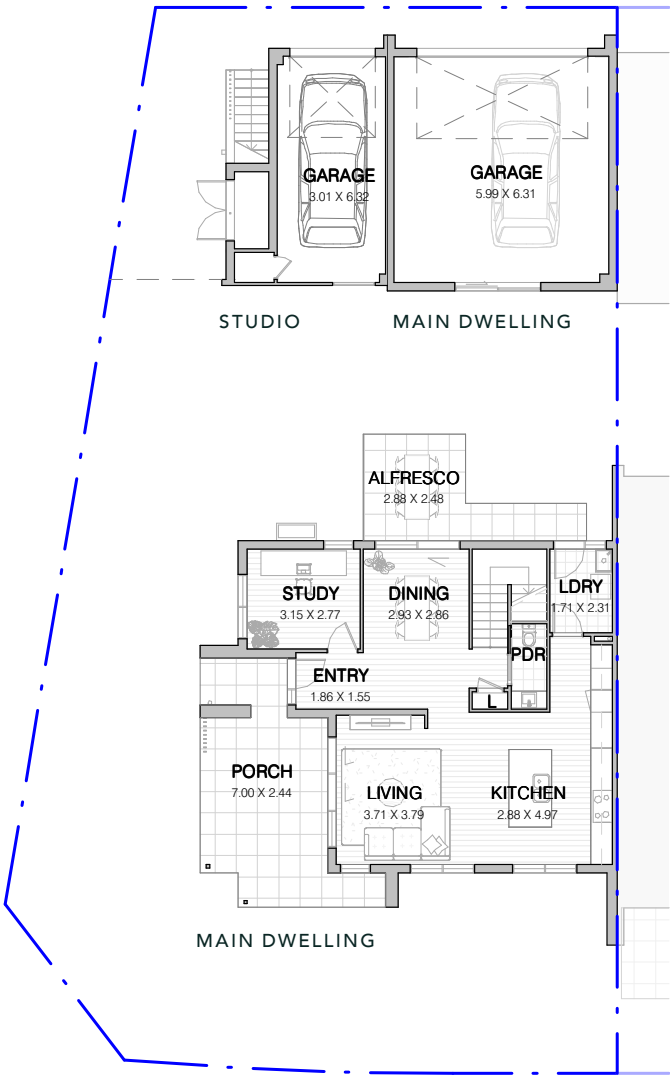
INCLUSIONS

Internal Colour Scheme: Apollo

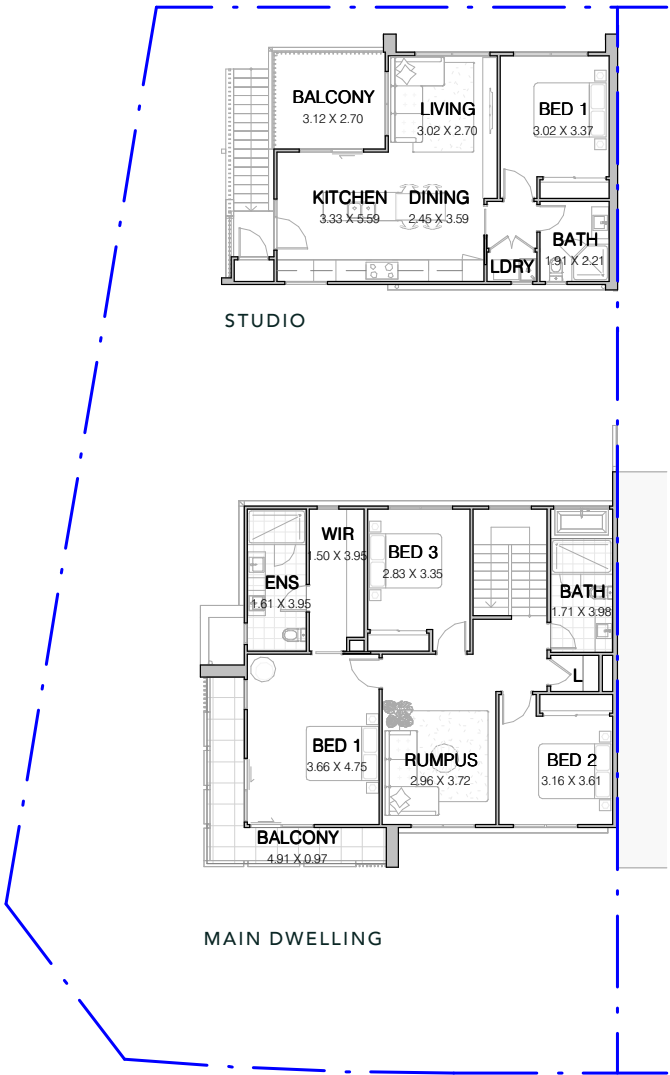
- Turnkey dwelling including landscaping, feature masonry and palisade front fence, side boundary fencing and letterbox
- 2740mm high ceilings to ground floor with increased doors
- SMEG 900mm appliances including integrated dishwasher and rangehood
- LED downlights throughout
- Stone benchtops to kitchen and bathroom
- Hybrid timber floor to main living areas with upgraded carpet to remaining areas
- Full-height tiling to ensuite with double vanity
- Square-set cornice to ground floor
- Ducted air-conditioning throughout
- Laundry with built-in joinery



GROUND FLOOR



FIRST FLOOR



MAIN DWELLING AREA

Ground Floor	86m ²
First Floor	96m ²
Garage	44m ²
Porch	4m ²
Alfresco	20m ²
Balcony	8m ²
Patio	9m ²

STUDIO AREA

First Floor	56m ²
Garage	24m ²
Balcony	8m ²

Total Floorspace	356m ²
Total Lot Areas	452m ²

