

MARIAN'S
MANA

NOLAN



153 CENTRAL AVENUE
LOT 5 | EUREKA



3



3.5



1



168m²

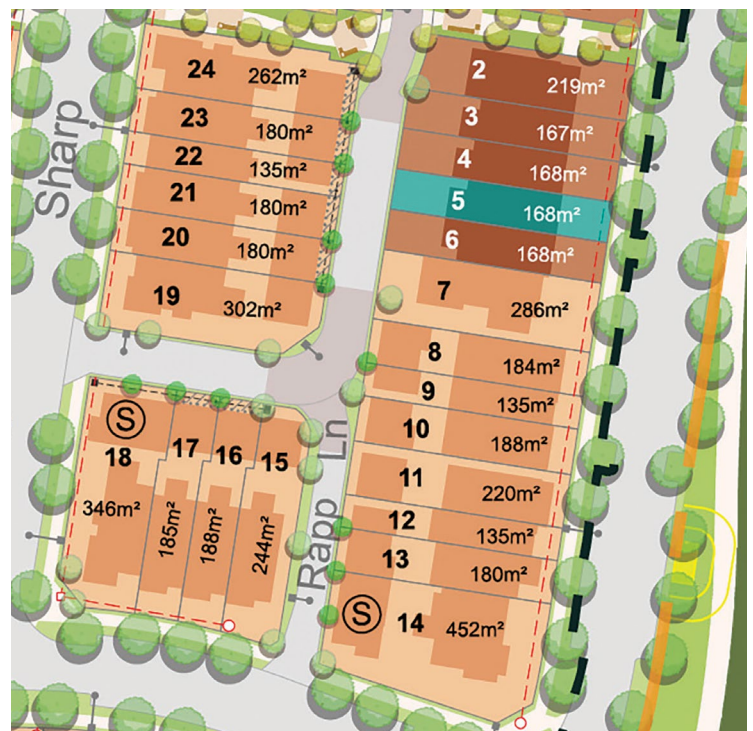


249m²

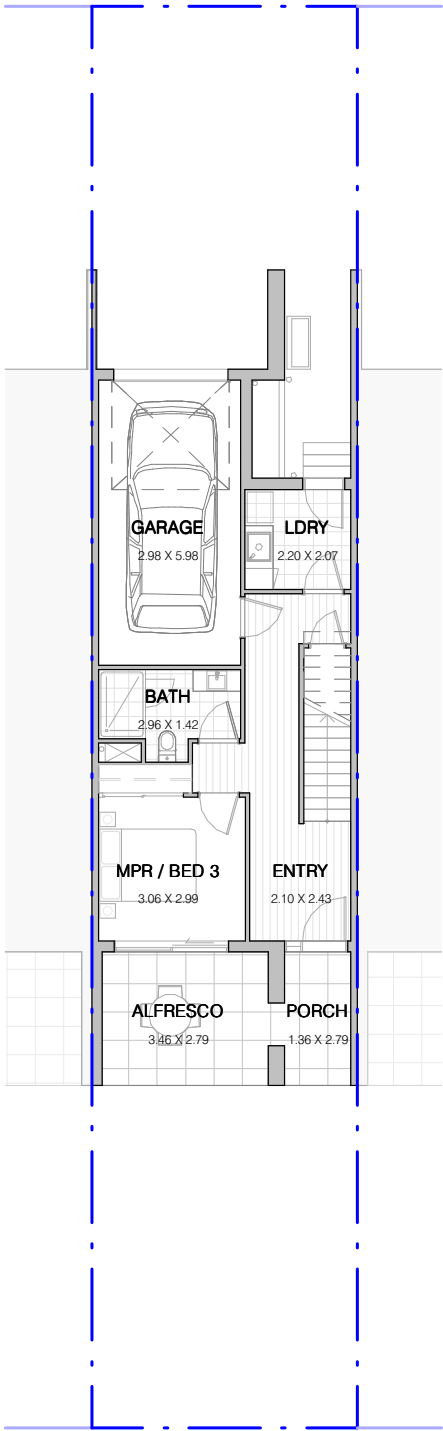
INCLUSIONS

Internal Colour Scheme: Cove

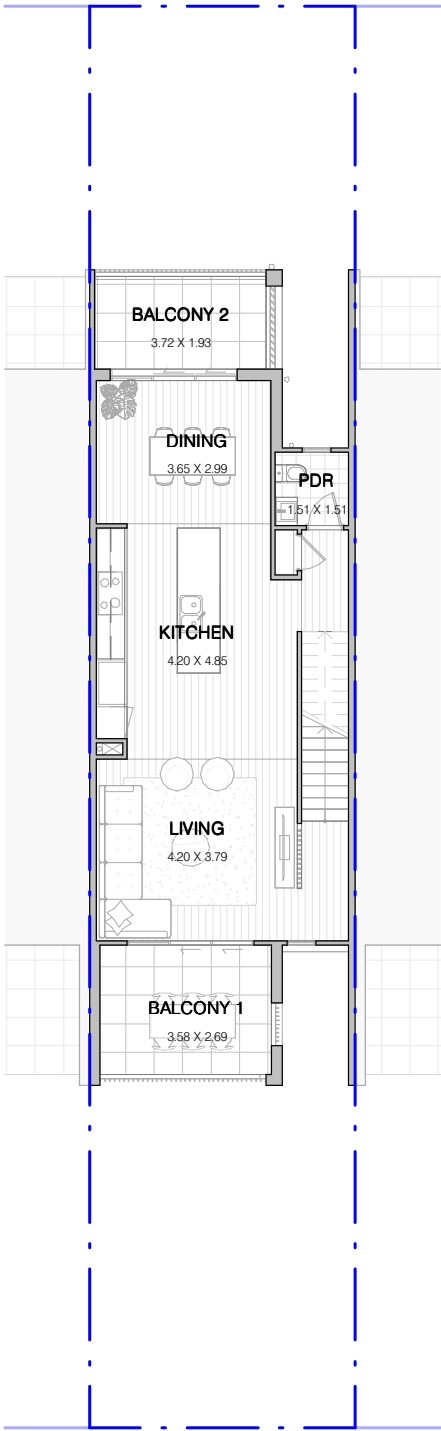
- Turnkey dwelling including landscaping, feature masonry and palisade front fence, side boundary fencing and letterbox
- 2740mm high ceilings to ground and first floor with increased doors
- SMEG 900mm appliances including integrated dishwasher and rangehood
- LED downlights throughout
- Upgraded 40mm stone benchtop to kitchen with standard in bathroom
- Hybrid timber floor to main living areas with upgraded carpet to remaining areas
- Full-height tiling to ensuite with double vanity
- Square-set cornice to ground floor and first floor
- Ducted air-conditioning throughout
- Laundry with built-in joinery



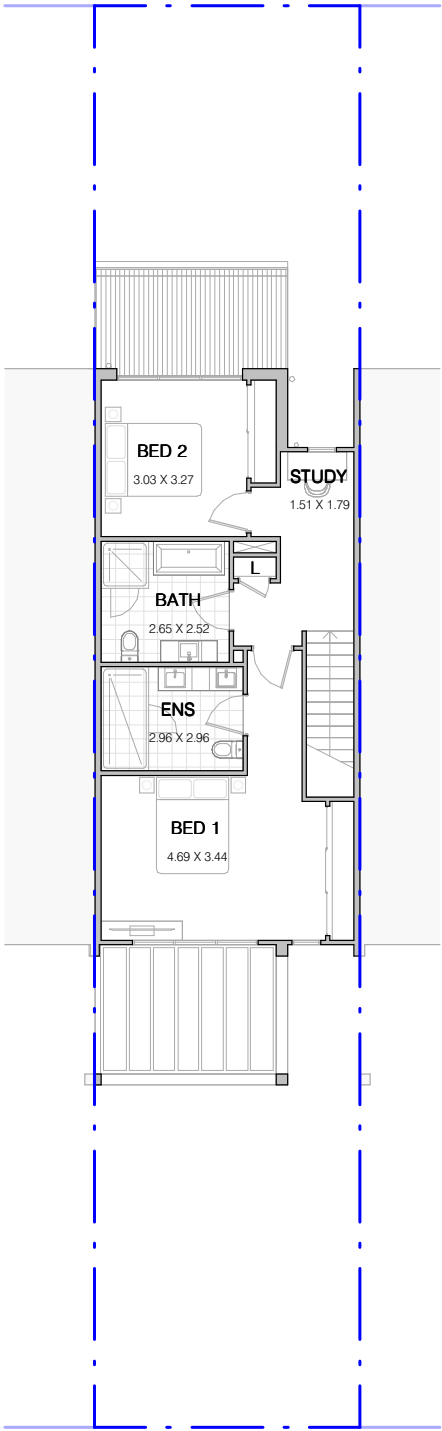
GROUND FLOOR



FIRST FLOOR



SECOND FLOOR

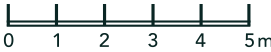


FLOORSPACE AREA

| | |
|--------------|------------------|
| Ground Floor | 66m ² |
| First Floor | 66m ² |
| Second Floor | 65m ² |
| Porch | 4m ² |

| | |
|---------------|------------------|
| Front Balcony | 12m ² |
| Rear Balcony | 7m ² |
| Alfresco | 11m ² |
| Garage | 18m ² |

| | |
|-------------------------|-------------------------|
| Total Floorspace | 249m² |
| Total Lot Areas | 168m² |



ORAN PARK

02 9043 7500

oranpark.com.au