

MARIAN'S
MANA

NOLAN



Disclaimer: This artist's impression is for illustrative purposes only and may not accurately represent the specific lot. Please contact the sales team for detailed, lot-specific built form information.

155 CENTRAL AVENUE
LOT 4 | EUREKA



3



3.5



1



168m²



230m²

INCLUSIONS

Internal Colour Scheme: Apollo

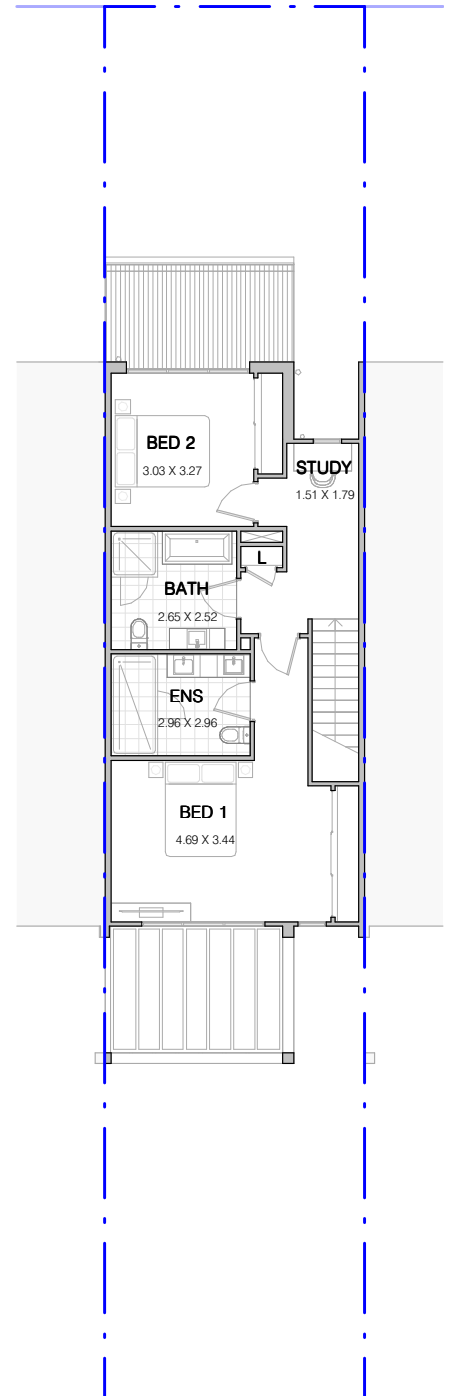
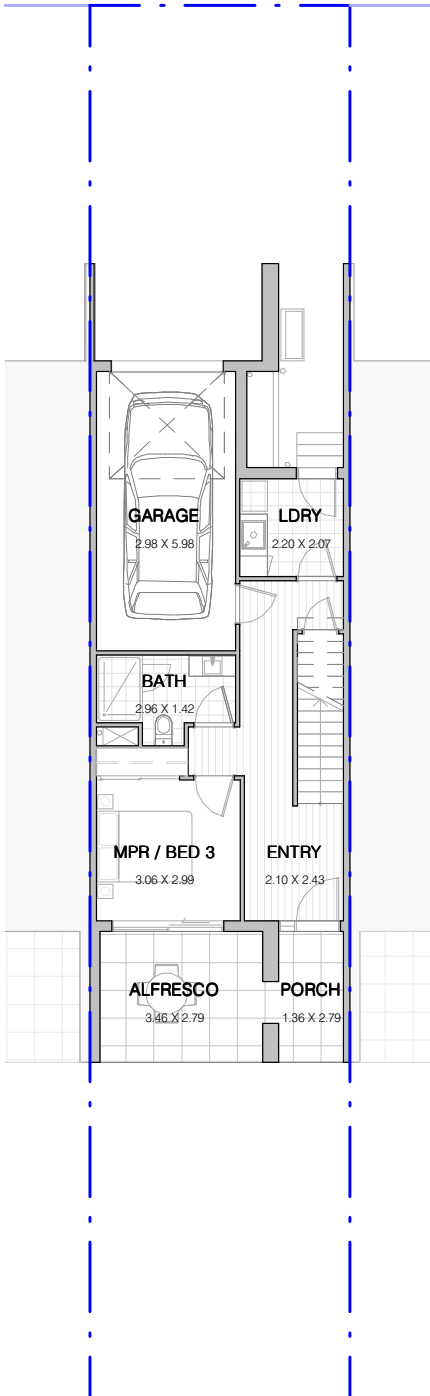
- Turnkey dwelling including landscaping, feature masonry and palisade front fence, side boundary fencing and letterbox
- 2740mm high ceilings to ground and first floor with increased doors
- SMEG 900mm appliances including integrated dishwasher and rangehood
- LED downlights throughout
- Upgraded 40mm stone benchtop to kitchen with standard in bathroom
- Hybrid timber floor to main living areas with upgraded carpet to remaining areas
- Full-height tiling to ensuite with double vanity
- Square-set cornice to ground floor and first floor
- Ducted air-conditioning throughout
- Laundry with built-in joinery



GROUND FLOOR

FIRST FLOOR

SECOND FLOOR



FLOORSPACE AREA

Ground Floor	64m ²
First Floor	66m ²
Second Floor	64m ²
Porch	5m ²

Balcony 1	9m ²
Balcony 2	11m ²
Alfresco	11m ²

Total Floorspace	230m²
Total Lot Area	168m²

