

MARIAN'S
MANA

NOLAN



Disclaimer: This artist's impression is for illustrative purposes only and may not accurately represent the specific lot. Please contact the sales team for detailed, lot-specific built form information.

6 MEREDITH STREET LOT 16 | SIDNEY



4



3



2



188m²



198m²

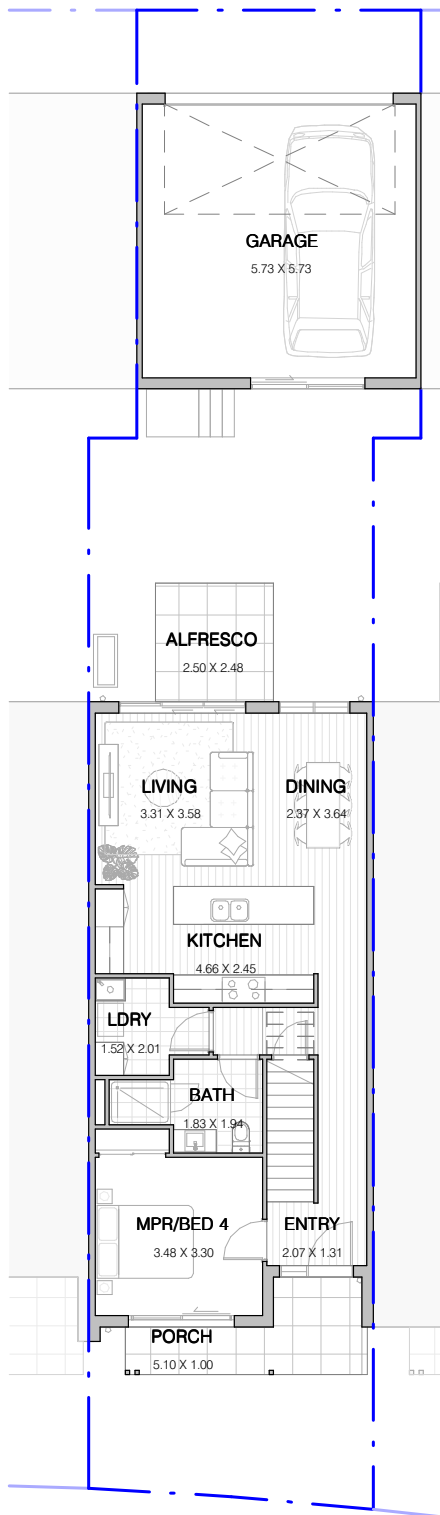
INCLUSIONS

Internal Colour Scheme: Cove

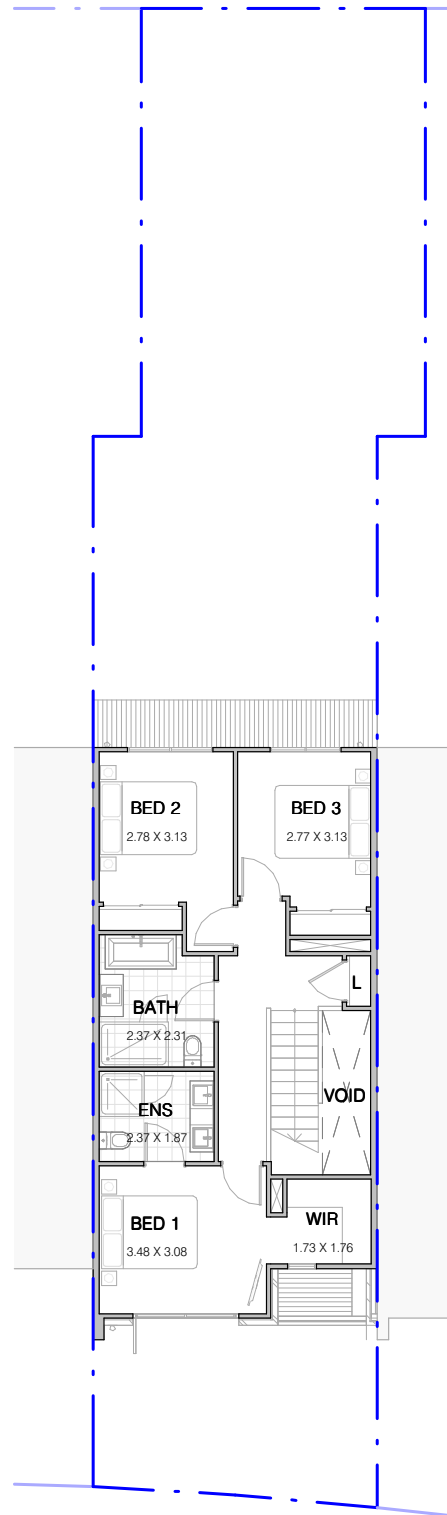
- Turnkey dwelling including landscaping, feature masonry and palisade front fence, side boundary fencing and letterbox
- 2740mm high ceilings to ground floor with increased doors
- SMEG 900mm appliances including integrated dishwasher and rangehood
- LED downlights throughout
- Stone benchtops to kitchen and bathroom
- Hybrid timber floor to main living areas with upgraded carpet to remaining areas
- Full-height tiling to ensuite with double vanity
- Square-set cornice to ground floor and first floor
- Ducted air-conditioning throughout
- Laundry with built-in joinery



GROUND FLOOR



FIRST FLOOR



FLOORSPACE AREA

Ground Floor	77m ²	Garage	38m ²	Total Floorspace	198m²
First Floor	70m ²	Alfresco	6m ²	Total Lot Area	188m²
Porch	7m ²				



ORAN PARK

02 9043 7500

oranpark.com.au