

MARIAN'S
MANA

NOLAN

LOT 7

Disclaimer: This artist's impression is for illustrative purposes only and may not accurately represent the specific lot. Please contact the sales team for detailed, lot-specific built form information.

149 CENTRAL AVENUE
LOT 7 | SWAN



4



3.5



2



286m²



262m²

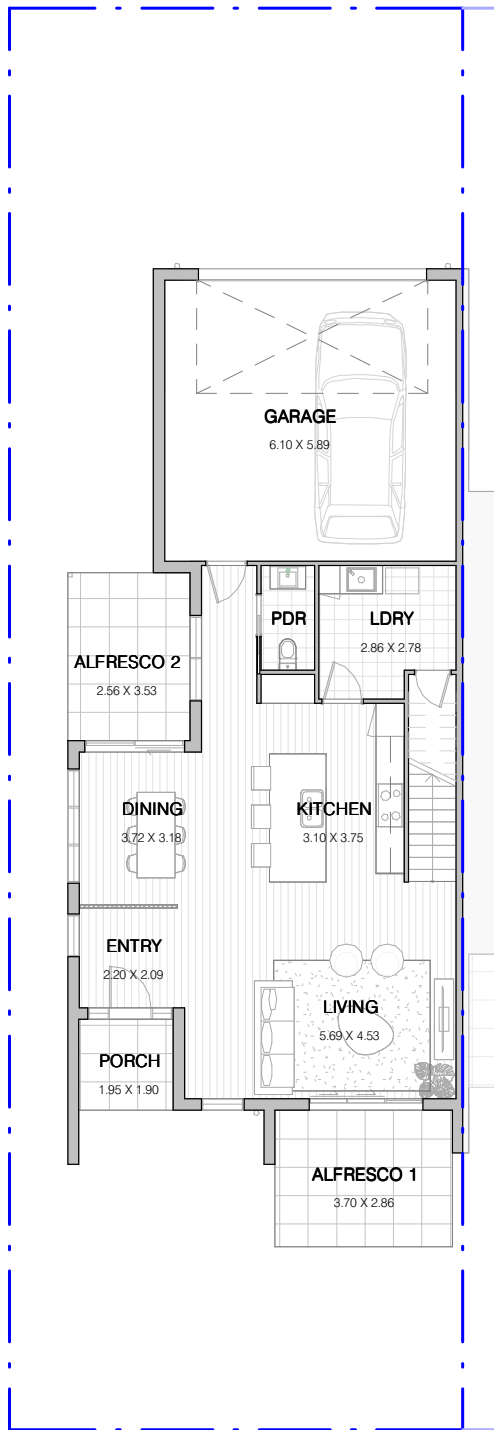
INCLUSIONS

Internal Colour Scheme: Apollo

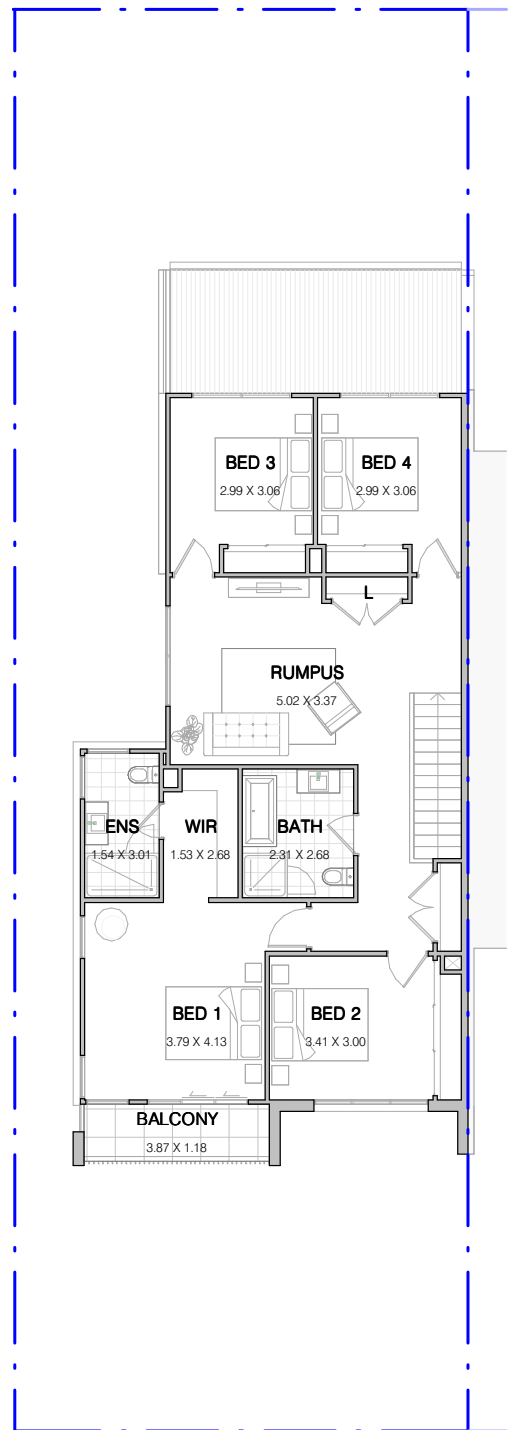
- Turnkey dwelling including landscaping, feature masonry and palisade front fence, side boundary fencing and letterbox
- 2740mm high ceilings to ground floor with increased doors
- SMEG 900mm appliances including integrated dishwasher and rangehood
- LED downlights throughout
- Upgraded 40mm stone benchtop to kitchen with standard in bathroom
- Hybrid timber floor to main living areas with upgraded carpet to remaining areas
- Full-height tiling to ensuite with double vanity
- Square-set cornice to ground floor and first floor
- Ducted air-conditioning throughout
- Laundry with built-in joinery



GROUND FLOOR



FIRST FLOOR



FLOORSPACE AREA

Ground Floor	83m ²	Balcony	5m ²	Total Floorspace	262m²
First Floor	110m ²	Alfresco Front	11m ²	Total Lot Area	286m²
Porch	4m ²	Alfresco Rear	9m ²		
Garage	40m ²				

